

## FILTER CARTRIDGE MAINTENANCE



The filter cartridge needs to be checked, cleaned and replaced regularly. It is very important to keep proper water flow. A clean filter enables the hydrotherapy system to work properly and allows for more efficient filter cycles. Depending on the usage frequency of the spa, we recommend cleaning the spa filter cartridge every four weeks. If this is not done, the filter may block and restrict water flow, which causes improper filtration, poor jet performance and may possibly freeze.

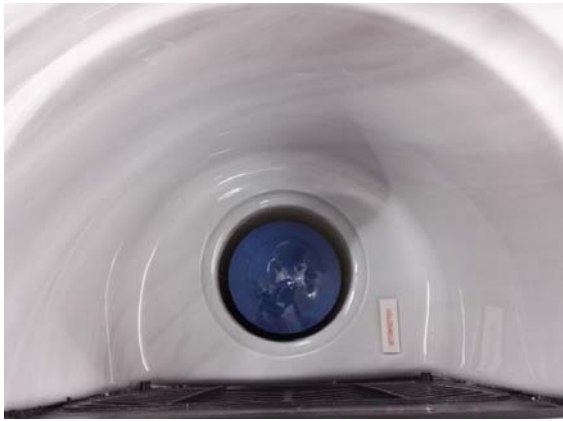
**IMPORTANT:** The cleaning frequency of the filter cartridge is depends on the swim spa use frequency and number of users. More use means that more frequent filter cartridge cleanings will be required.

### Filter cartridge removal and replacement

1. Remove the filter cover.



2. Twist the filter cartridge and take it out.



3. Place a new filter cartridge into the filter cylinder.



4. Put the filter cover back.

